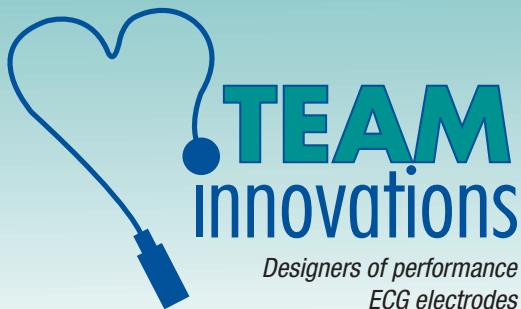


Don't Blow Your Tests
with Fuzzy Results!



**TEAM Innovations introduces the
ClassicTrode-Diagnostic ECG Electrode**



ClassicTrode-Diagnostic

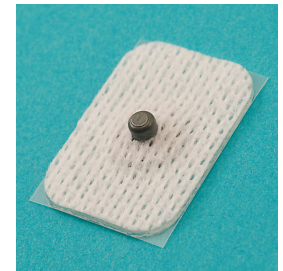
Team Innovations offers multiple variations of traditional snap ECG electrodes with the ClassicTrode series. The ClassicTrode Diagnostic, also known as the SoftyTrode, is a solid gel, short-term ECG electrode.

The ClassicTrode-Diagnostic series of ECG electrodes are available in two lead wire connection configurations:

- **Stainless Steel Snap**
- **Radio translucent sensing element**



ClassicTrode Diagnostic
with Stainless Steel Snap

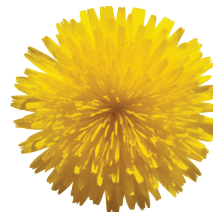


ClassicTrode Diagnostic
with Radio Translucent
Sensing Element

Both ClassicTrode Diagnostic models offer:

- **White spunwoven, soft and pliable backing material or medical grade foam**
- **Full surface solid hydrogel adhesive**
- **Easy repositioning**
- **Silver/Silver Chloride sensor**
- **Low impedance**

The ClassicTrode Diagnostic is available in two backing materials, multiple size and geometric shapes to fit any ECG electrode application. The 7/8" x 1-1/4" (22 mm x 32 mm) rectangular, white spunwoven backing material configuration (pictured here) is ideally suited for pediatric use. Contact Team Innovations for your specific requirements.



CONTACT: TEAM INNOVATIONS
2521 South 98th Street
West Allis, WI 53227
262-513-9000
www.TEAMelectrodes.com